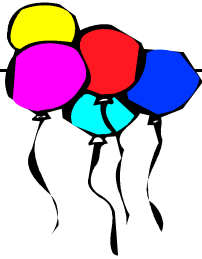
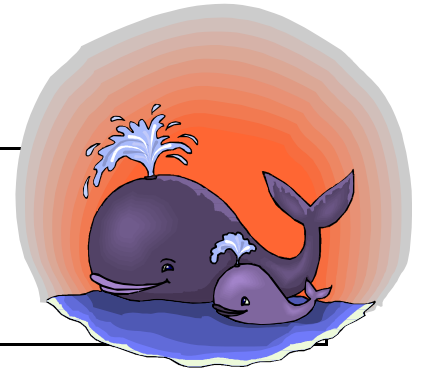


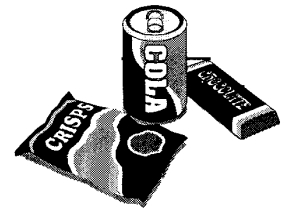
You can make a difference!



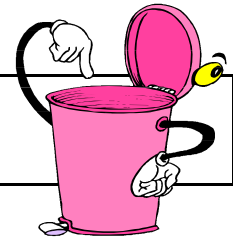
Don't let balloons escape. They may blow out to sea and be eaten by whales who mistake them for jellyfish. Be careful with plastic bags too.



Choose food that has less packaging. It's usually cheaper and better for you too! This means less rubbish ending up in the sea.

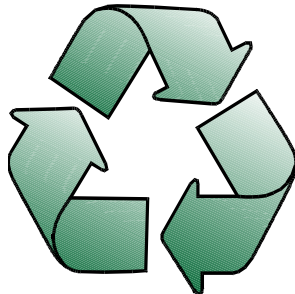


Put your rubbish in its proper place. Don't let it end up blowing about in the wind, especially if you live near the sea.



When you go shopping take your own bag or basket, instead of using up lots more plastic bags. The chemicals in plastics end up in the sea causing dangerous pollution problems.

Look out for this label. It means the packaging can be recycled. Put glass in the bottle bank. Sometimes paper and cans can be recycled too.



Watch out for soap powder, washing up liquid etc that is biodegradable. This means it will break down safely with fewer harmful chemicals entering the seas.

