

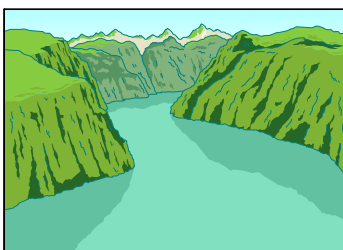
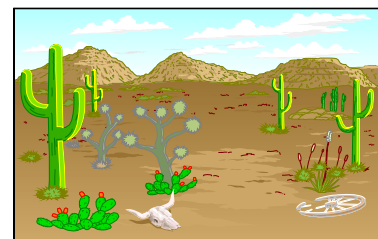
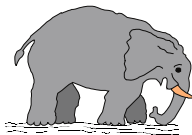
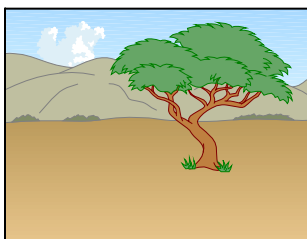
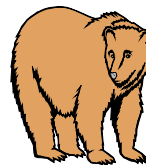
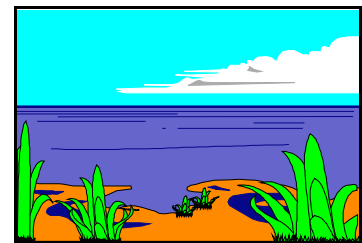
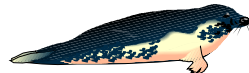
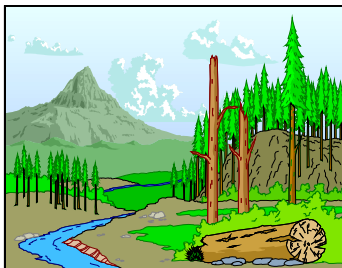
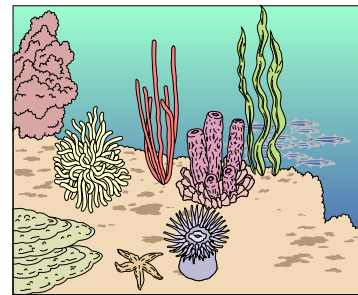
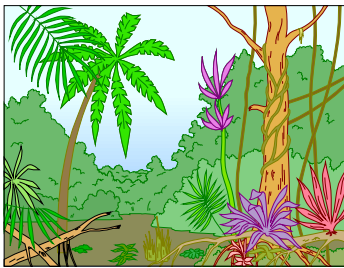
Our world is a fragile place. It is our responsibility to protect it.

“...this span of earth is but one homeland and one habitation.”

Bahá'u'lláh

There is only one world, but it contains many different **habitats**. Habitats provide animals with everything they need: food, shelter and warmth. Each species of animal is suited to its own habitat and usually can't live anywhere else. If the habitat is destroyed, the animals depending on it cannot survive.

Can you match each animal with its habitat?



The different peoples of the world must work together, in friendship, to protect these habitats.